



SLIPMOUNT[®]
S Y S T E M
DRIVING FORCE IN DIGLESS FENCE!

Products Manufactured by SMS Industries Ltd.

Slip Mount Privacy Fence Installation

5Ft and 6 Ft Tall Privacy Styles

(Guide for privacy fence posts with U-channels)



PART - 2





Confirm the location of underground utilities with local providers before you dig.



TOOLS REQUIRED



DRILL • 5/16" HEX DRIVER BIT • TAPE MEASURE
STRINGLINE • RUBBER MALLET • 4 FT LEVEL

CIRCULAR SAW • PLASTIC OR ALUMINIUM CUTTING
BLADE • SHOVEL



Always wear the proper (PPE) Personal Protective Equipment
during any project construction!

Safety Glasses * Hearing Protection * Gloves * Foot ware

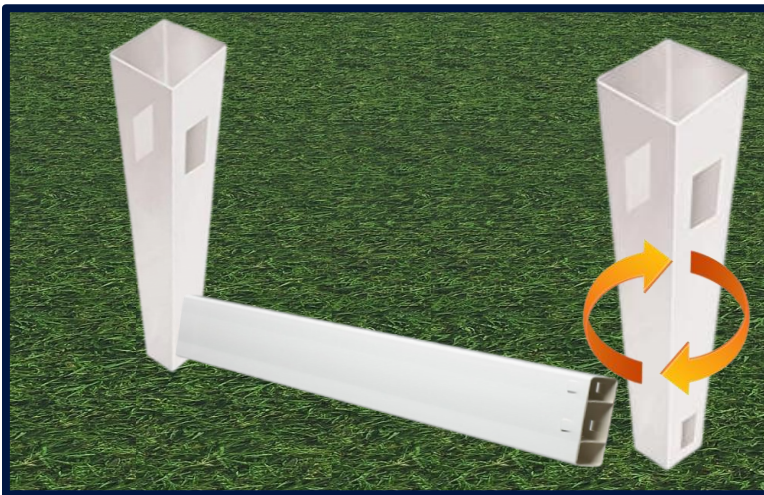
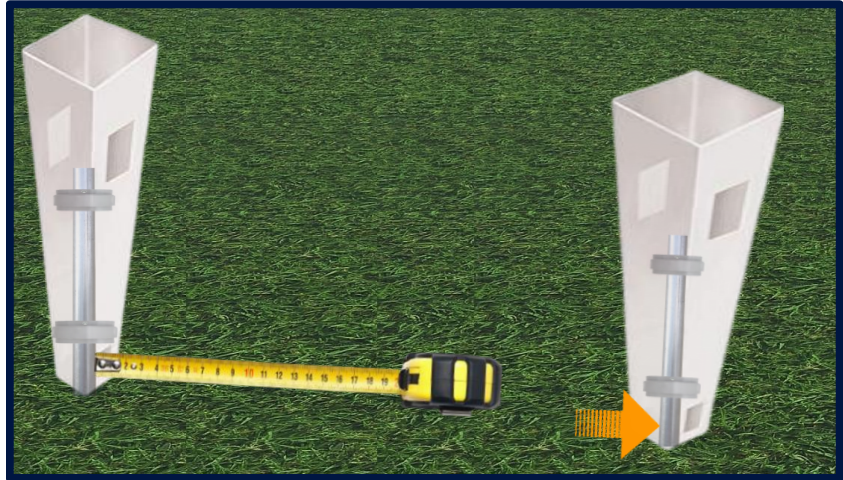


STEP 1

MEASURE AND CUT BOTTOM RAILS

Measure inside lower post cut-out, pipe to pipe. Cut bottom rail slightly less, ($-\frac{1}{4}$ ") off the total measurement.

**Bottom "Rail Inserts" must be cut to the same length.*



STEP 2

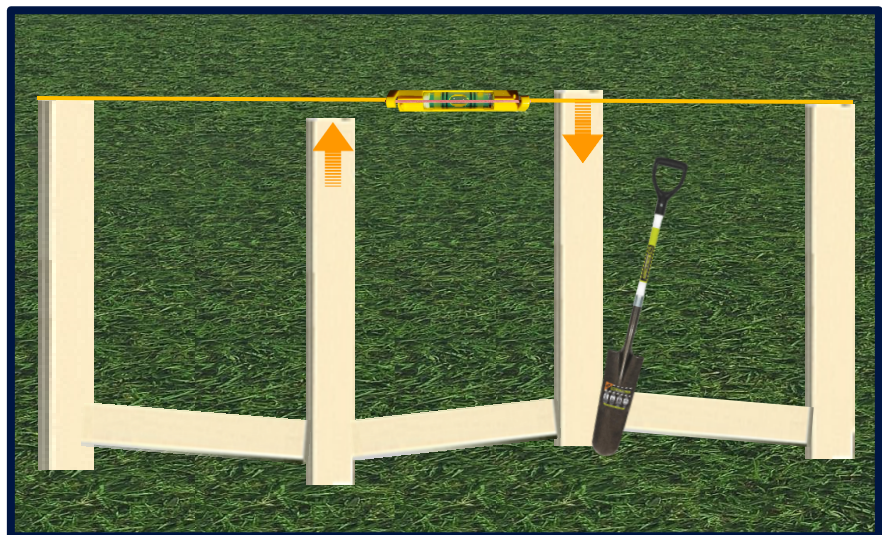
ROTATE VINYL POST INSERT BOTTOM RAILS

Insert rail end into post cut out, rotate opposite post outwards, insert the other rail end. Using twisting action rotate post back into position. Snap in all bottom rails along fence line.

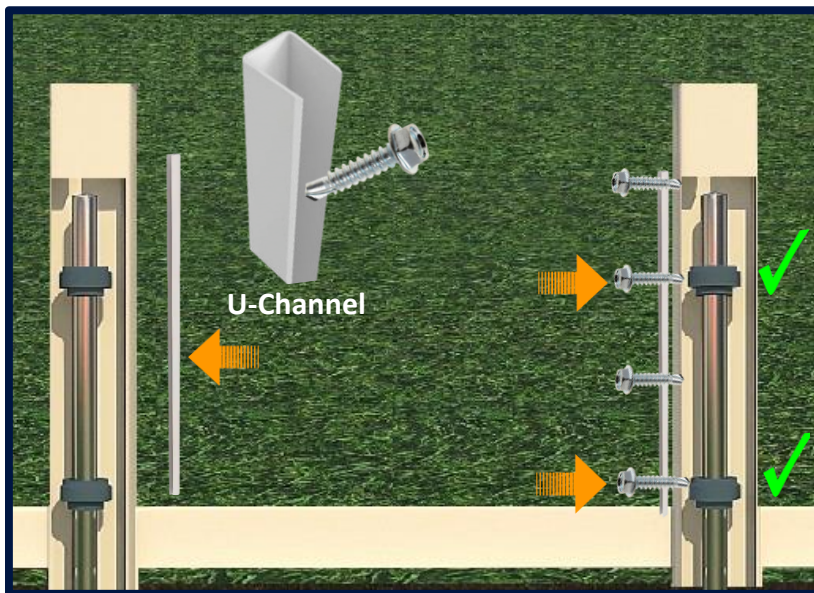
STEP 3

SET POST HEIGHT

Begin at the corner or end posts, set both posts to desired height, run a string line across all post tops. Adjust in-line posts up or down to position at line.



**Use a shovel to remove soil around the post base to either dig down or fill temporary to support post.*



STEP 4 IMPORTANT!

FASTEN POSTS TO PIPE

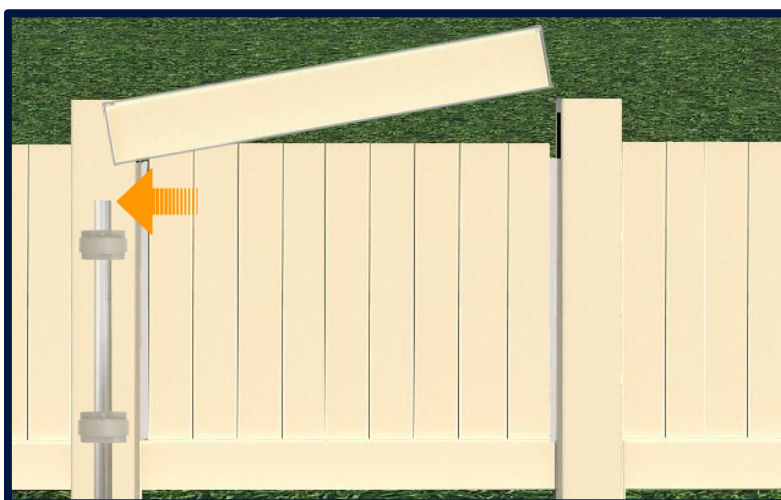
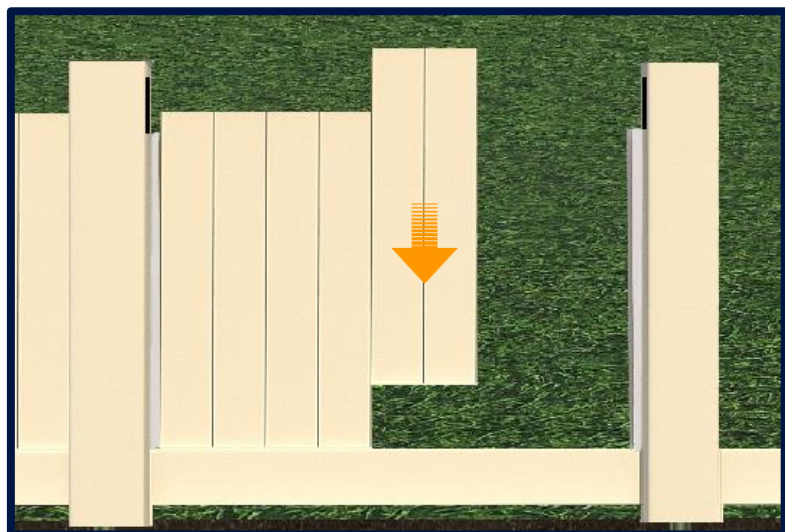
Screw “U-Channel” to post, place between 4 & 5, 5/16”x 1” long screws into U-Channel. (2) screws will tap into Slip Mounts inside the post, securing it to the pipe.

**Locate the (2) Slip Mount positions by measuring or using a string line.*

STEP 5

INSTALL T&G SLATS

Starting from one side insert the T&G vertical slats into bottom rail and U-Channel. The last T&G slat may have to be cut to size, use a Skill Saw or Table Saw with a plastic cutting blade.



STEP 6 **INSTALL TOP RAILS**

Insert top rail into post, lower and slide across T&G Slats into opposite post cut out.

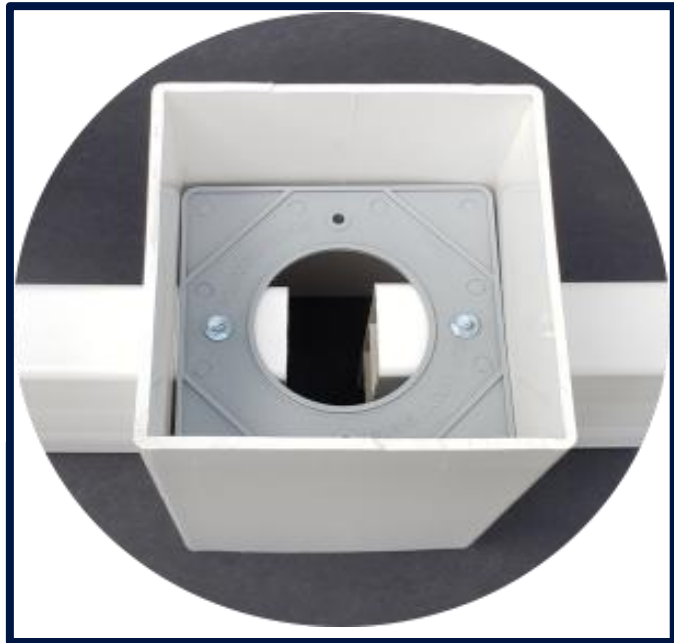
**5 & 6 Ft tall fence, top rails should pass over and above the internal pipe during this step.*

STEP 7

FASTEN RAIL-LOCKS

Place “Rail-Lock” into top of post cavity and fasten on to Fence panel rails using 5/16” x 1” screws.

Overhead view of post shown.



STEP 8

POST CAPS

Install all post caps.

** If post caps fit loose, use silicone glue, this will allow easy future access if required.*

SLIP MOUNT[®]
SYSTEM
DRIVING FORCE IN DIGLESS FENCE!

Protected US Industrial Design Patent No. D630085. Slip Mount System[®] is a Registered Trademark Name

Tech Install Tips! Toll Free Calling USA, Canada Ph: 1-877-295-4530

Web: www.slipmount.com Email: info@slipmount.com

© Copyright SMS Industries Ltd. 2021