



SLIPMOUNT[®]
S Y S T E M
DRIVING FORCE IN DIGLESS FENCE!

Products Manufactured by SMS Industries Ltd.

Slip Mount Collar Level & Fastening Guide

Pipe & Post Collar Installation (2-3/8" • 1-7/8")

(Guide for 5' & 6' tall privacy fence posts with U-channels)





Confirm the location of underground utilities with local providers before you dig.



TOOLS REQUIRED



DRILL • 5/16" HEX DRIVER BIT • TAPE MEASURE
STRINGLINE • RUBBER Mallet • 4 FT LEVEL

MANUAL METAL POST POUNDER
OR
PORTABLE GAS POWER POST DRIVER



Always wear the proper (PPE) Personal Protective Equipment
during any project construction!

Safety Glasses * Hearing Protection * Gloves * Foot wear

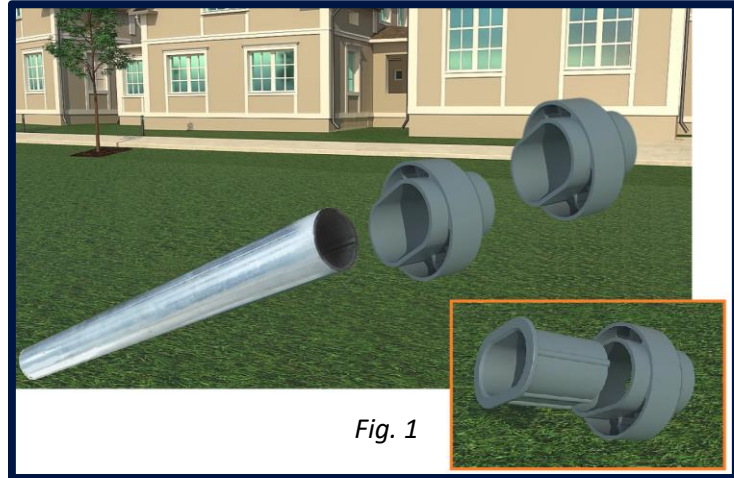


STEP 1

PLACE SLIP MOUNTS ON PIPE

Place (2) Slip Mounts on all pipe, use a rubber mallet to assist. ** Leave on loose.*

For 1-7/8" pipe place Reducer Inserts inside the Slip Mount. See Fig. 1

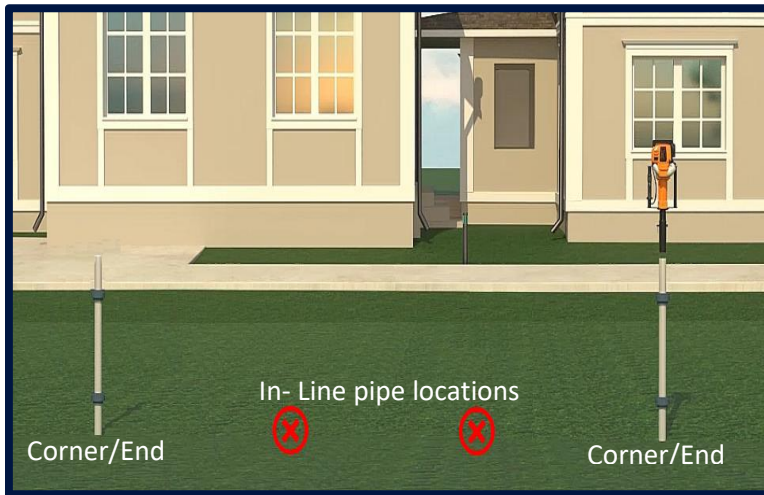


STEP 2

SET ALL CORNER PIPE OR END PIPE

Establish your fence layout or fence line.

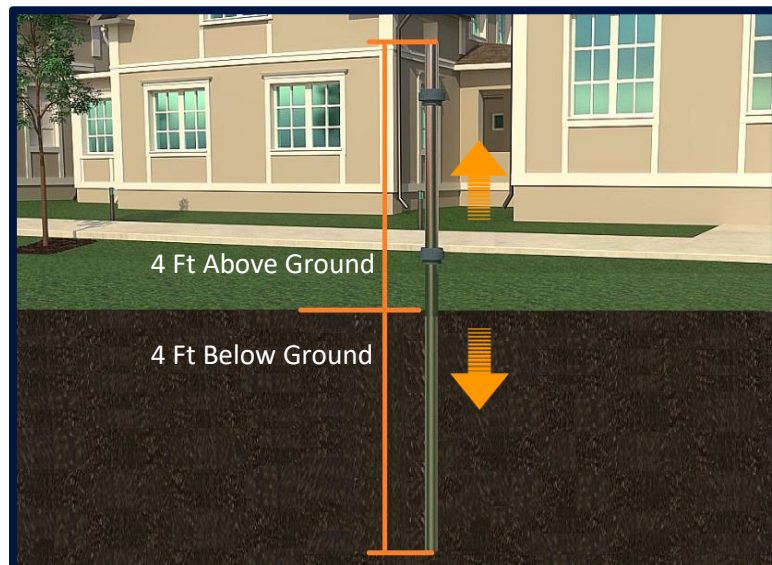
** For gate hinge side posts, refer to your fence material supplier. A galvanized or aluminium "GATE POST INSERT" may be required for fastening gate hardware to the vinyl gate hinge mount post.*

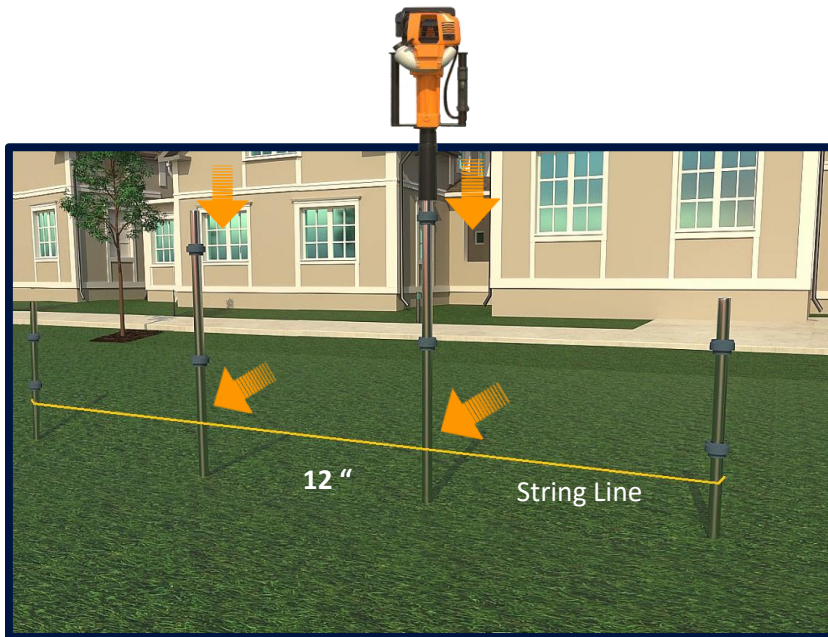


STEP 2 (Cont.)

8 Ft long pipe is required for 5 & 6 Ft high privacy styles, $\frac{1}{2}$ of the pipe's length is set below ground. (48") 4 Ft

7 Ft length pipe may be used with 5 Ft tall privacy, Drive in between 3-1/2 Ft & 4 Ft of pipe below ground.



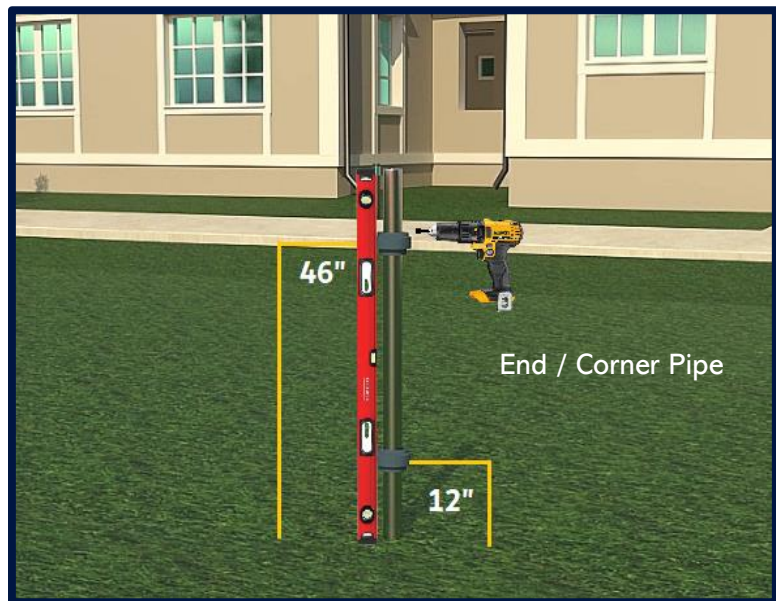


STEP 3 DRIVE IN ALL IN-LINE PIPE (Between End/Corners)

Place the stringline 12" off the ground, attach to corner or end pipes. Calculate in-line pipe spacing based on material post center specification. drive-in remaining in-line pipe to string line. Level pipe vertically when installing.

STEP 5 LEVEL & ATTACH END/CORNER PIPE SLIP MOUNTS

Remove stringline from End/Corner pipe, position lower Slip Mount 12" off the ground, position top Slip Mount approx. 46" above ground. Plumb/Level & Fasten-on Slip Mounts with (2) Self Tapping Screws.



Fasten-on with (2) 5 / 16" x 1" long self tapping, or self drilling screws. Place (1) screw at upper location, and on the opposite side place the (2nd) screw at the lower position. *Do not over tighten.*

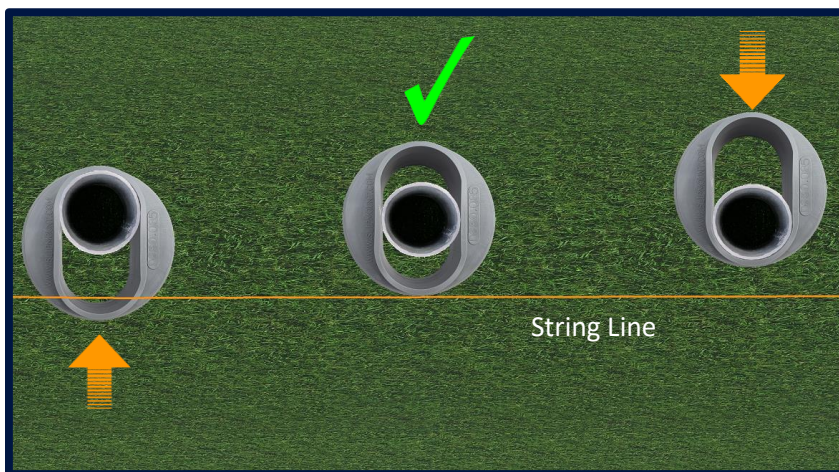
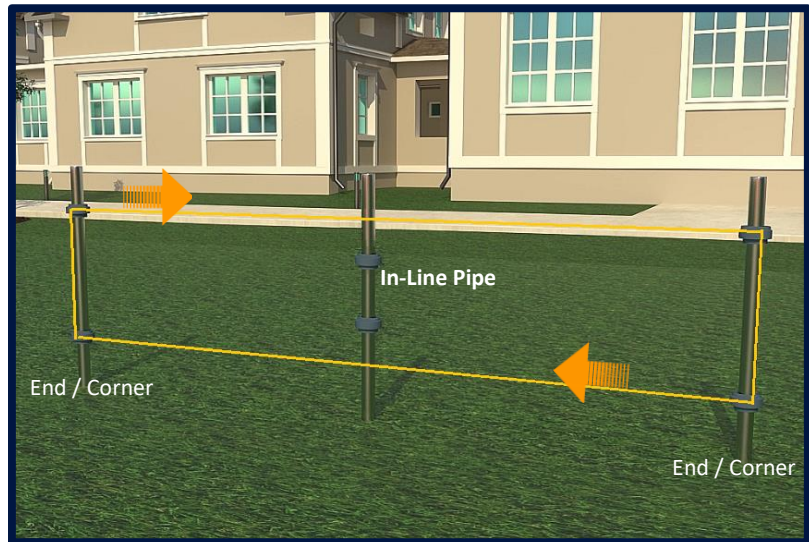


5/16" Driver Bit

STEP 6

LEVEL & ATTACH IN-LINE PIPE SLIP MOUNTS

Run a string line from the End/Corner Slip Mounts, you may use a temporary screw placed slightly into the side wall of the Slip Mount. Run this string line across and to the opposite end, if the string is long enough, continue this procedure along the bottom of Slip Mounts.



Continued

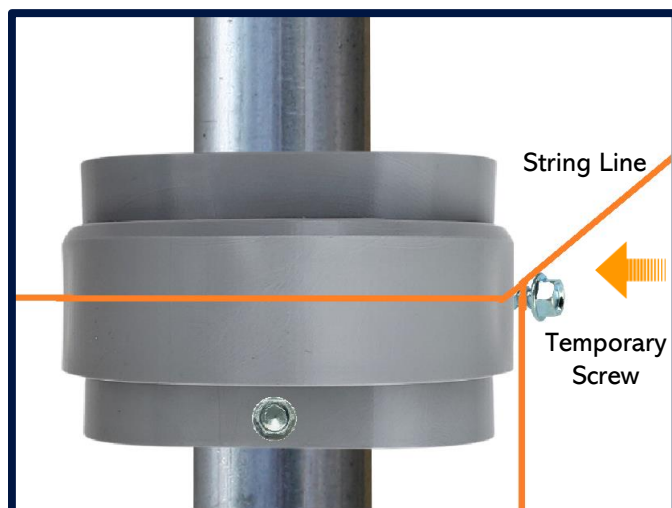
Photo viewing pipe from above.

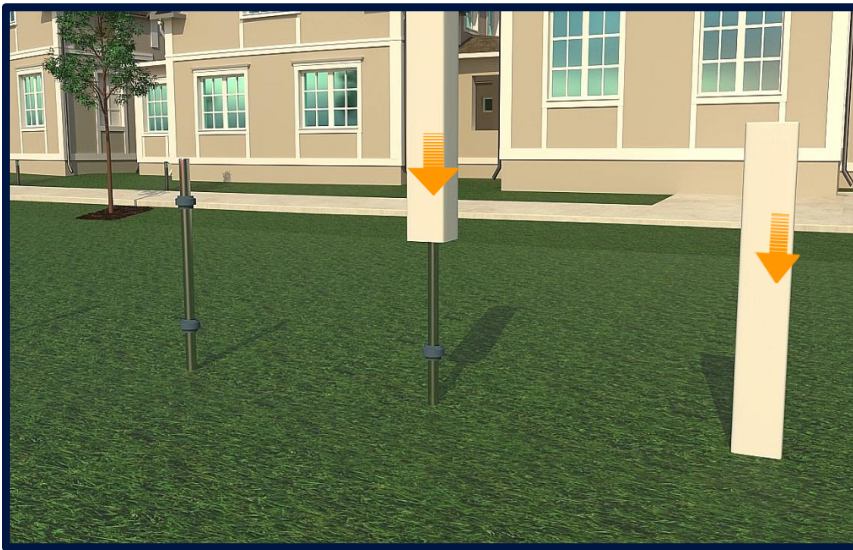
Adjust Slip Mounts on the in-line pipe, slide either left or right so they are just touching the string line, fasten on Slip Mounts with (2) screws per each.

STEP 7

REMOVE TEMPORARY SET SCREWS

Remove the temporary placed screws from the side wall of the Slip Mounts.



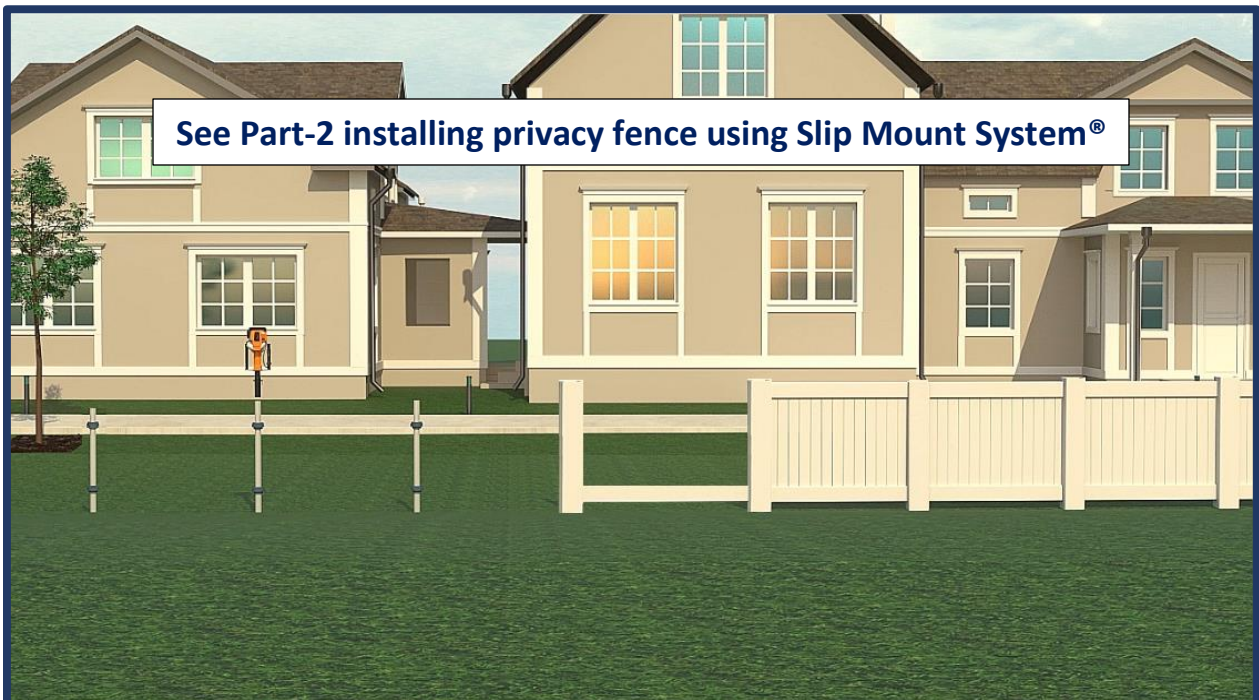


STEP 8

SLEEVE OVER PIPE WITH VINYL POSTS.

Place vinyl posts over pipe and mounts based on fence layout plan, leave posts loose at this point.

** Attaching the vinyl post to the pipe & Slip Mounts will come in a later step.*



SLIP MOUNT[®]
SYSTEM
 DRIVING FORCE IN DIGLESS FENCE!

Protected US Industrial Design Patent No. D630085. Slip Mount System[®] is a Registered Trademark Name

Tech Install Tips! Toll Free Calling USA, Canada Ph: 1-877-295-4530

Web: www.slipmount.com Email: info@slipmount.com

© Copyright SMS Industries Ltd. 2021